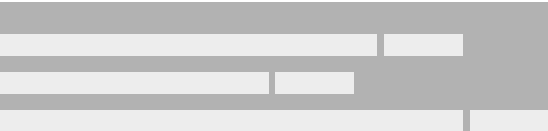
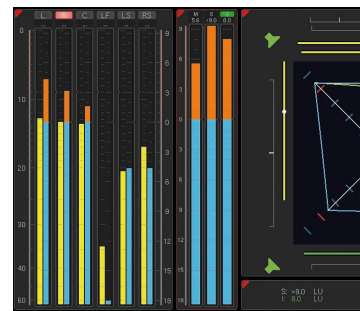
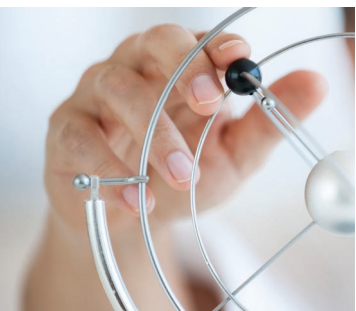


Setting new standards
TouchMonitor TM7/TM9



TouchMonitor TM7/TM9

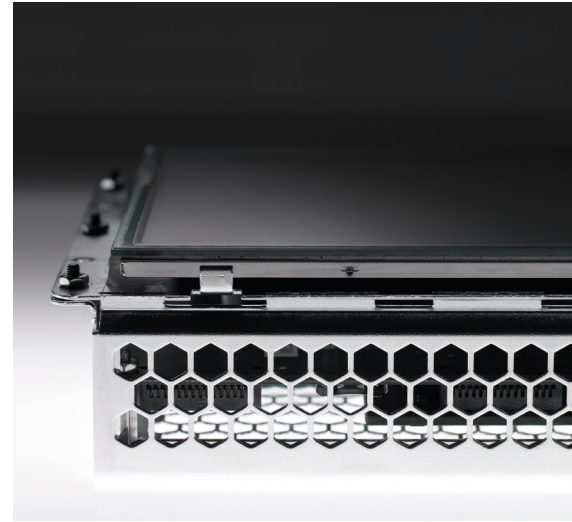


The Sight of Sound

In an ideal world, the human ear would be the best instrument any of us could use for quality control and impartial judgment of your daily work. However, it is just not that simple. The introduction of HD and surround sound, as well as loudness control issues have triggered an increasing demand for quality control and monitoring of audio signals.

Fast perception and accurate assessment of audio levels using visual representation methods are indispensable elements of daily work. Sub-optimal monitoring conditions, stress and aural fatigue are just a few of a large number of reasons why relying just on one's ears is not enough.





Introducing: The TouchMonitor

The all-new TouchMonitor range is RTW's answer to growing requirements in today's production, post-production, and broadcast world. Equipped with high-grade 7" or 9" touch screens and an easy-to-use GUI, TouchMonitor enters a new level of professional audio metering in terms of precision, performance, efficiency and flexibility.

Simple and flexible

The graphical user interface used in the TouchMonitor range is controlled simply by using your finger. Instruments can be scaled, randomly positioned and combined in almost every way for optimized use of available screen space. Even multiple instruments of the same type, assigned to different input channels and configurations, can be displayed simultaneously. Plus, a comprehensive on-screen help feature supports the user, allowing him to make setup changes with ease.

Facts and Figures

- Easy and fast touch screen control with on-screen help
- Highly flexible screen layout options with scalable instruments
- Powerful DSP platform for parallel display of multiple instruments
- 16-channel audio interfacing including analog, AES3, and AES3id (depending on hardware version)
- 3G SDI interface for up to 32 input channels (hardware option for TM9 only)
- Fully scalable, modular software approach for flexible configuration and easy on-site upgrades
- Ethernet/LAN, USB, VGA and GPIO ports

Standard Software (all models):

- 2-channel PPM and TruePeak with Peak Hold
- 2-channel Correlator
- 2-channel AES Status Monitor (with digital I/O)

Available software modules (all models):

- Multichannel
- Loudness (ATSC, EBU, ITU, ARIB, Custom) and SPL
- RTA - Real Time Analyzer
- SSA - Surround Sound Analyzer
- Radar Display
- RTW Premium PPM plus Vectorscope and Moving Coil



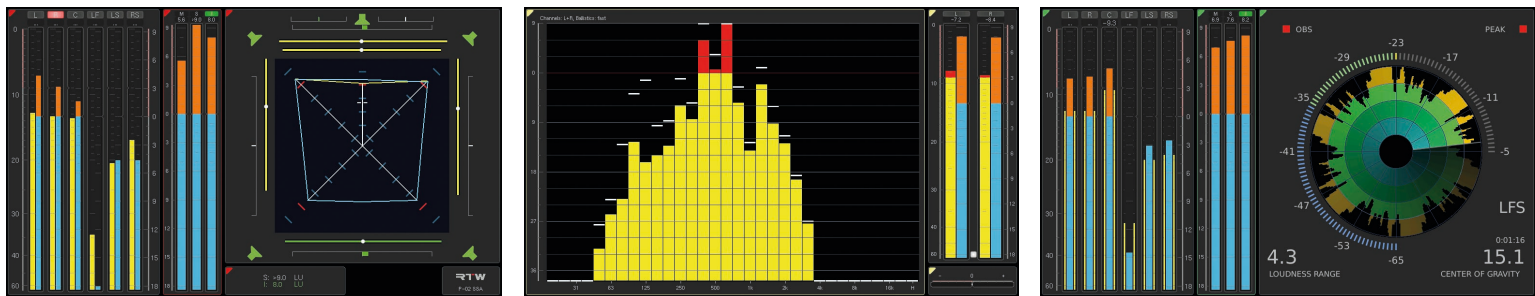
Audio I/O options

TouchMonitor TM7 and TM9 perfectly integrate with today's analog and digital audio and video studio environments. They handle up to 16 input signals in analog, AES3, and AES3id formats (depending on selected I/O option). In addition, the TouchMonitor TM9 can be fitted with a 3G SDI interface as an option, providing up to 32 input channels simultaneously.



Build your meter!

A totally modular software concept means that you only have to purchase features that you actually require. This puts you in control, defining the functionality of an individual TouchMonitor that suits your needs best. New instruments and functions can be added as software modules to the device at any time. Many display functions known from existing RTW products are available to choose from.



Standard Software

Every TouchMonitor comes with a basic software package allowing for PPM, True Peak Meter, and correlation measurements of two input channels at a time. The PPM supports various analog and digital scale types. Any channel pair out of the 16 input channels provided by the hardware (32 inputs

for TM9 with 3G SDI option fitted) can be routed to the instruments. Storing individual presets with different routings lets you access any input channel pair without having to repatch input connections.

Optional Software Modules

SW20001: Multichannel Mode

- Full parallel access to all hardware input channels
- Multiple audio groups simultaneously showing different input channel groups
- 3.1, 5.0, 5.1, 7.1 Cinema, 7.1 DD+, and Multichannel

SW20002: Loudness and SPL Display

- Loudness bargraphs conforming to EBU R128, ITU-R BS.1770-2/1771, ATSC A/85, ARIB
- Summing loudness bargraphs and numerical displays conforming to standards named above
- Customer loudness mode
- SPL bargraphs

SW20003: RTA - Real Time Analyzer

- 1/3 oct. (31 bands) or 1/6 oct. (61 bands) modes
- HF band showing content above 20 kHz

SW20004: SSA - Surround Sound Analyzer

(SW20002 required)

- Unique, dynamic display of all relevant surround parameters
- Intuitive visualization of overall acoustic image
- Based on loudness measurements

SW20005: Radar Display (SW20002 required)

- High-resolution, circular loudness display according to loudness radar meter by TC electronic®
- Predictable loudness management in broadcast, film, post-production and music
- Displays instant loudness, loudness history and true peak level compliant with ITU, EBU, ATSC, ARIB

SW20006: RTW Premium PPM plus Vectorscope

- Advanced PPM scale selection
- Audio Vectorscope and Moving Coil instruments

Product Line-up

TouchMonitor TM7 table-top unit
7" touch screen 16 : 9 TFT, table-top unit with table stand, power supply
Order Number: 20700

TouchMonitor TM7 OEM unit
7" touch screen 16 : 9 TFT, main unit without housing for panel-mounting
Order Number: 20700OEM

TouchMonitor TM7 3U rack-mount unit
7" touch screen 16 : 9 TFT, 19"/3U/42HP rack-mount unit with power supply
Order Number: 20700-3U

TouchMonitor TM7 plug-in module
7" touch screen 16 : 9 TFT, half-19"/3U plug-in module with power supply for video
Order Number: 20700VID

Audio Interface Selection (I/O Options)	max. Channel Count (Hardware)	Inputs Analog (balanced)	Inputs Digital/Outputs Digital	Input Option
add. Order Number: HW20711	8 ch analog In, 8 ch digital In, 8 ch digital out	1 x 25-pin Sub-D	1 x 25-pin Sub-D (4 x AES3 in, 4 x AES3 Out)	---
add. Order Number: HW20712	8 ch analog In, 8 ch digital In, 8 ch digital out	1 x 25-pin Sub-D	8 x BNC (4 x AES3id In, 4 x AES3id Out)	---

TouchMonitor TM9 table-top unit
9" touch screen 16 : 9 TFT, table-top unit with table stand, power supply
Order Number: 20900

TouchMonitor TM9 OEM unit
9" touch screen 16 : 9 TFT, main unit without housing for panel-mounting
Order Number: 20900OEM

Audio Interface Selection (I/O Options)	max. Channel Count (Hardware)	Inputs Analog (balanced)	Inputs Digital/Outputs Digital	Input Option (3G SDI Interface HW20930)
add. Order Number: HW20911	8 ch analog In, 8 ch digital In, 8 ch digital out	1 x 25-pin Sub-D	1 x 25-pin Sub-D (4 x AES3 in, 4 x AES3 Out)	can be retrofitted
add. Order Number: HW20912	8 ch analog In, 8 ch digital In, 8 ch digital Out	1 x 25-pin Sub-D	8 x BNC (4 x AES3id In, 4 x AES3id Out)	can be retrofitted
add. Order Number: HW20913	16 ch digital In, 16 ch digital Out	---	2 x 25-pin Sub-D (8 x AES3 in, 8 x AES3 Out)	can be retrofitted
add. Order Number: HW20914	16 ch digital In, 16 ch digital Out	---	16 x BNC (8 x AES3id In, 8 x AES3id Out)	can be retrofitted
add. Order Number: HW20915	16 ch analog In	2 x 25-pin Sub-D	---	can be retrofitted

Standard Hardware (all models): Table-top unit with easy-to-use graphical interface, Ethernet, 2 x USB, GPIO, VGA Out, table-stand, mains adapter. Audio Interface Selection required (I/O options)!
OEM unit with easy-to-use graphical interface, Ethernet, 2 x USB, GPIO, VGA Out. Audio Interface Selection required (I/O options)!

Standard Software (all models): Basic stereo PPM with analog scales (DIN +5, Nordic, British Ila, British IIb) and digital scales (0 to -60 dB, +3 to -60 dB True Peak, DIN, Nordic, British Ila and IIb), peak hold, stereo correlator. Other software modules available as licences.

Licences (Software Modules) Further information on <http://www.rtw.de/en/products/audio-monitors/touchmonitor-tm7.html> resp. <http://www.rtw.de/.../touchmonitor-tm9.html> --> Options

Multichannel Mode Order Number: SW20001	Loudness and SPL Display Order Number: SW20002	RTA - Real Time Analyzer Order Number: SW20003	SSA - Surround Sound Analyzer Order Number: SW20004	Radar Display Order Number: SW20005	RTW Premium PPM Order Number: SW20006
	SW20001 is required for the display of more than 2 channels	SW20001 is required for the display of more than 2 channels	Precondition: installed SW20002! SW20001 is required for the display of more than 2 channels	Precondition: installed SW20002! SW20001 is required for the display of more than 2 channels	

The Loudness Radar Meter is trademark or registered trademark of TC Electronic A/S, 8240 Risskov, Denmark

Dimensions: W x H x D in mm (approx.)

TM9 Table-top unit 20900: 245 x 183 x 46.5

TM7 Table-top unit 20700: 198 x 163 x 46

TM9 OEM version 20900OEM: 235 x 135 x 45

TM7 OEM version 20700OEM: 188 x 109 x 45



TouchMonitor TM7 OEM



TouchMonitor TM7



TouchMonitor TM9



"Gefördert vom Bundesministerium für Wirtschaft und Technologie aufgrund eines Beschlusses des Deutschen Bundestages."
Translation: Due to a resolution of the German Parliament this project is supported by the German Federal Ministry of Economy and Technology.